

Standard Reverse Tuck (SRT) or Reverse Tuck End (RTE)

An economical choice, sometimes referred to as RNT (Reverse Notch Tucked), RTE nests better than STE (Straight Tuck End). Tucks may have either friction fit or slit locks for a more secure closure. Tucks can be on panel two (French Tuck, FRT) or panel four (Standard Tuck), depending on presentation preference. Suited to either automatic or manual product loading, and are easier to open and close.

Pros to Standard Reverse Tuck

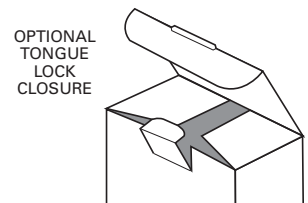
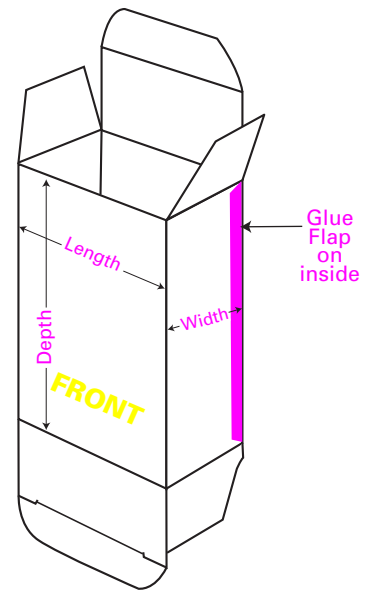
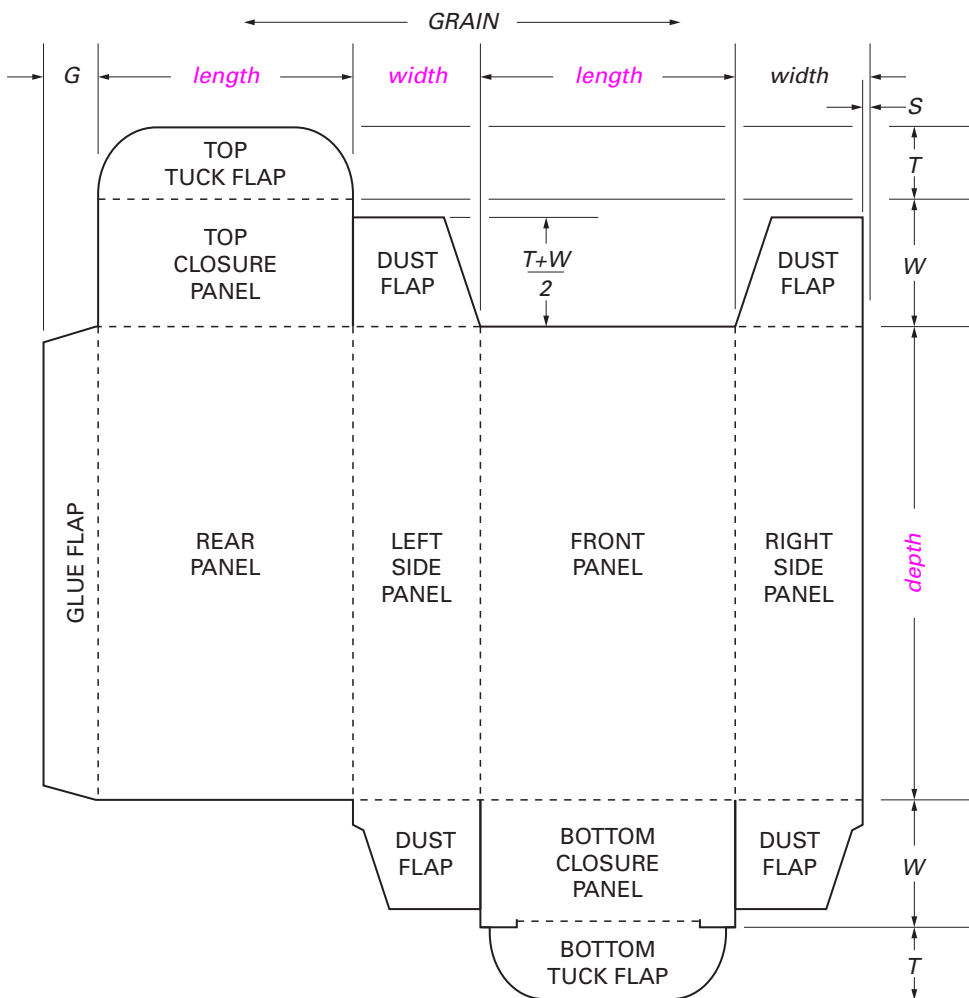
- Cost Effective, you can run more boxes at one time on the same sized paperboard as opposed to the Straight Tuck End, reducing waste and setup fees.
- Easy Assembly
- Compact Storing (stores flat) for excess packaging inventory.
- Relatively quick load your product in this packaging.
- Works well for lighter weight products

Cons to Standard Reverse Tuck

- Not good for heavy products.

Industries that most commonly use SRT

Food, Health & Beauty, Cosmetics, Pharmaceutical, Electronics, Nutraceutical, Retail Products



Size measured: L x W x D