

Airplane Style Straight Tuck (AST)

This style features closure panels on both the top and bottom that swing from the rear to tuck in the front. The Airplane Straight Tuck differs from the Standard Straight Tuck in that the top and bottom closure panels tuck from the rear to the front. This container can also be manufactured with friction fit or slit locks for a more secure closure. Straight tuck folding cartons allow products to be loaded on either side of the box, which can reduce manual assembly times. Straight Tuck cartons do tend to cost more than Reverse Tuck because of die tooling and limited nesting options on the press sheet. This folding carton style works best for a window option..

Pros to Straight Tuck End Box Styles

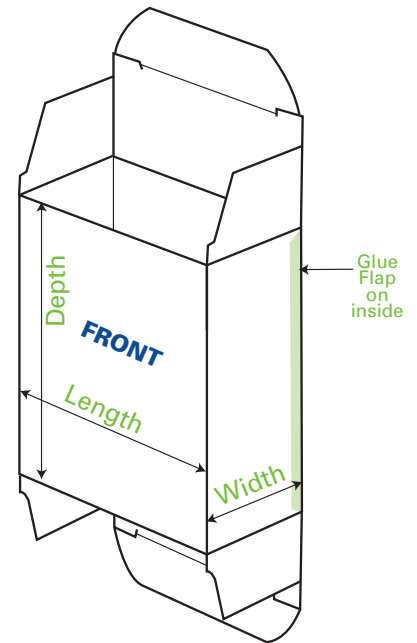
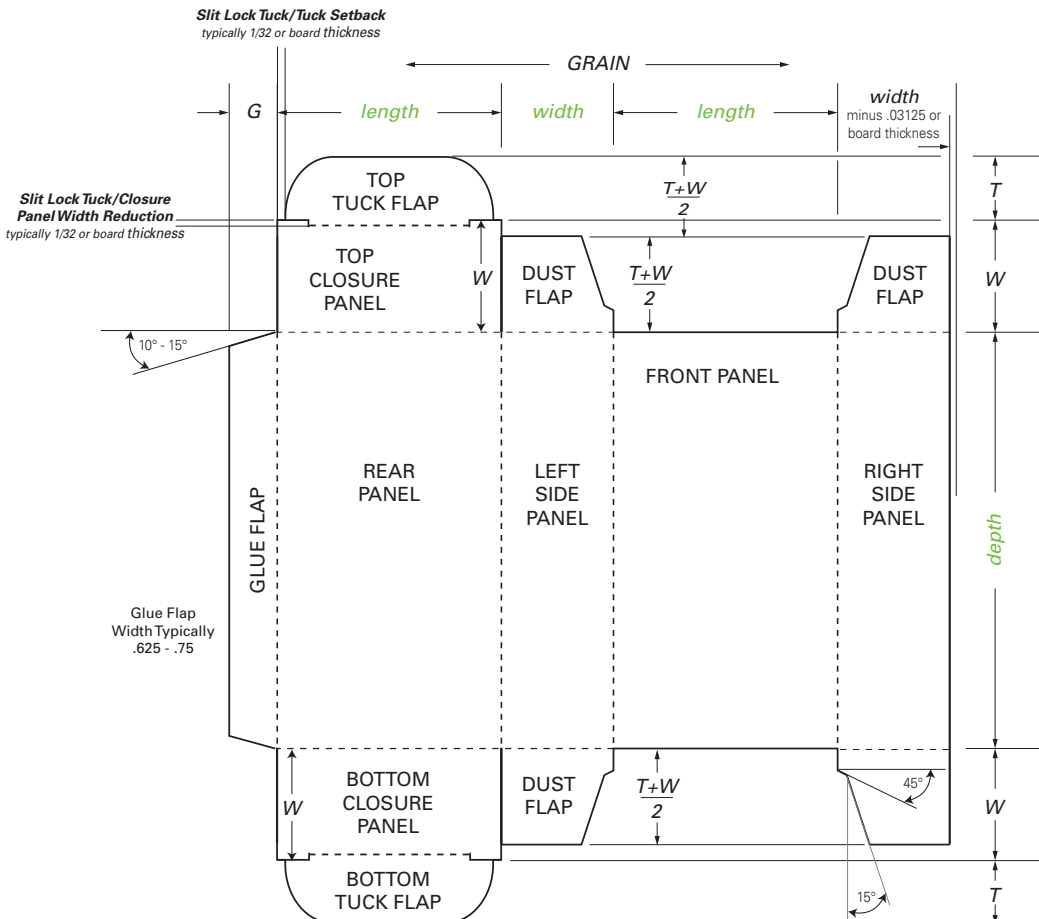
- More luxurious than the RTE because there are no white raw edges visible on the front of the box.
- Standard Straight Tuck Style cartons avoid any impedance between the tuck flap and any front window (see through window to the display of the product) you may choose to utilize. Tuck tabs are on panel three and fold front to back.
- Easy Assembly
- Compact Storing (stores flat) for excess packaging inventory.
- Relatively quick load your product in this packaging.
- Works well for lighter weight products

Cons to Straight Tuck End Box Styles

- More expensive, manufactures less boxes per paperboard sheet.
- Not good for heavy products.

Industries that most commonly use STE

Food, Health & Beauty, Cosmetics, Pharmaceutical, Electronics, Nutraceutical, Retail Products,



Size measured: L x W x D (Style shown is Airplane Style Straight Tuck)



FORTIS
SOLUTIONS GROUP